



EASTERN
CORPORATION LIMITED

Company Update

April 2010

CAMPBELL SMITH – Managing Director

SAM AARONS – Manager, Business Development & Corporate Relations

Overview

Emerging energy company with coal seam gas interests in

Australia and operating coal mines in New Zealand

Strategy in place to focus on the development and delivery of

Coal Seam Gas reserves for the East Coast gas market.

Recent success with AGL farm-in for \$37 million targeting

reserves certification in 2010

Option exercised for divestment of Broughton coal asset

Offer to Galilee Minority Shareholders

Financial Snapshot

Shares on Issue	102.8 million
Market Cap. ¹	\$36.4 million
Cash ²	\$3.4 million
Shareholders	Becamal Pty Ltd 18% AMP Life Limited 9% Top 20 Shareholders 53.9%

Notes:

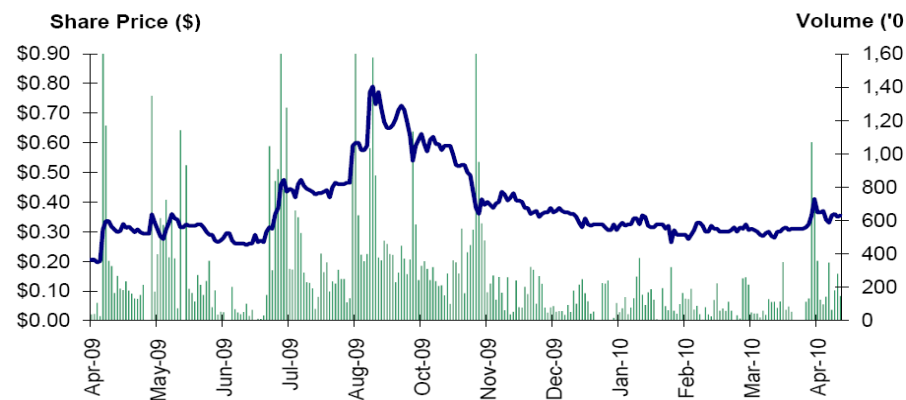
1. Share price \$0.355 as at 23 April 2010

2. As at 31 March 2010

Key Assets

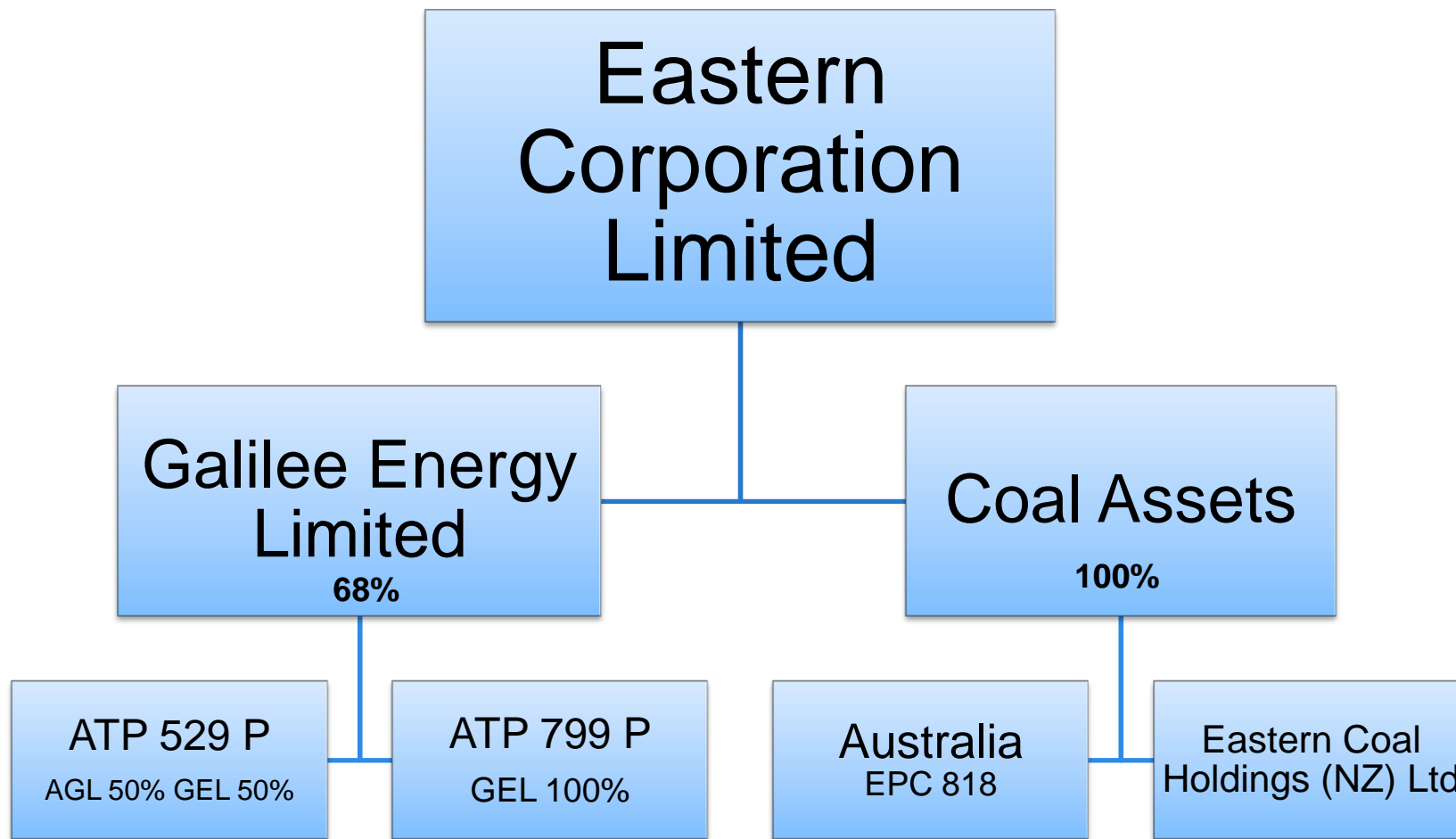
Coal Seam Gas Exploration - Queensland	
ATP 529P (50%)	Production Pilot - 2009
ATP 799P(100%)	Seismic & Appraisal Holes – 2009/10
Operating Coal Mines – New Zealand	
Cascade	45,000 tpa – take or pay contract
Takitimu	200,000 tpa – Major Fonterra contracts

Share Price Performance



Company Structure

Coal and Coal Seam Gas assets



Company Milestones

Developing energy company

1996	Listed on the ASX
2003	New team acquired 51% of Galilee Energy Limited
2003 - 4	Initial Galilee CSG pilot programme
2004	Australian Coal – purchase of Broughton (Mitsui Joint Venture)
2005 – 6	New Zealand Coal - Purchase of South Island mines
July 2007	Galilee RC8 drilled to confirm resource
July 2008	AGL Farm-in deal - \$37 million to fund exploration and appraisal
Dec 2009	ATP 529P Glenaras Production Pilot drilled
2009-10	ATP 529 P and ATP 799P Seismic and Core Holes
Feb 10	Option Exercised for Broughton Sale Offer to Galilee Minority Shareholders
April 10	Revised offer to Galilee Shareholders

Galilee Energy Limited

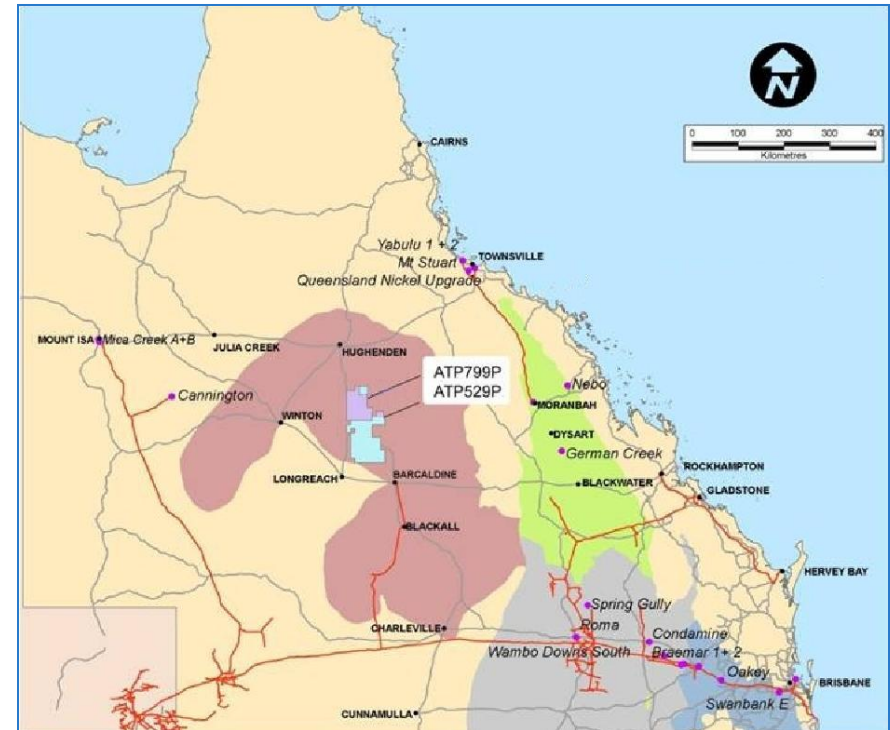
Two extensive exploration permits across 8,700 sq kms¹
Rodney Creek 8 core hole results suggest resource potential of >20 TCF² gas in place

Commercialisation

AGL – Gas marketing agreement
80km to an existing gas power station and pipeline connection to Moomba and Brisbane
Local gas fired power generation & industrial markets
External proposals for pipelines to export ports

Conventional hydrocarbon potential

Geological data and studies indicate potential
Exploration to be considered post CSG programme



1 – Relinquishment of 33.3% submitted for ATP 799P Feb 2010

2 - JR Holland & Associates

Rodney Creek 8 Core Hole Results

Confirmed a resource potential

24 metre Betts Creek & Aramac coal measures

Large continuous seams

Well cleated

Permeability Up to 150 millidarcies

Betts Creek average 69 md

Gas Contents

Median value 4.4 m³ / tonne

Gas composition

97 – 98% methane

Pipeline quality gas

Gas in Place

> 20 TCF



AGL Farm-in to ATP 529P

Funding exploration and appraisal

AGL (Operator) 50% Galilee 50% Joint Venture

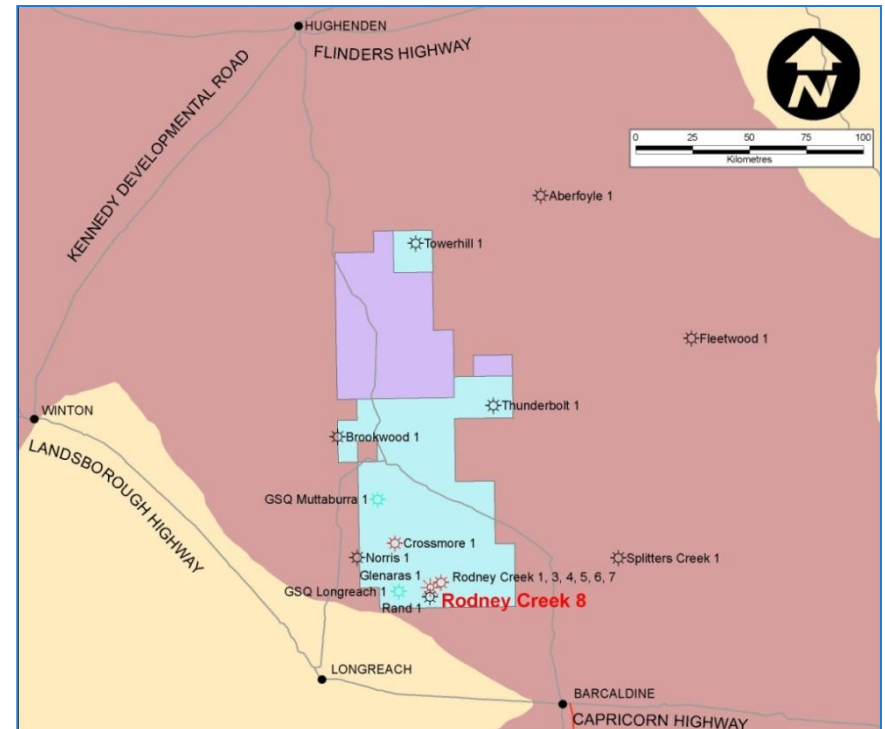
\$37m Farm-in deal - July 2008 to end 2010

Stage 1:

- Glenaras production pilot
- Initial reserves certification target Q3 2010

Stage 2:

- Exploration and appraisal
- 540 km 2D seismic acquisition completed
- 7 core hole drilling programme commenced



Galilee (Operator) 100%

\$5.48 m raised in July 09

Environmental survey

150 km 2D seismic October 09

Core hole drilling 09/10

Dunrossie-01

Dotswood-01

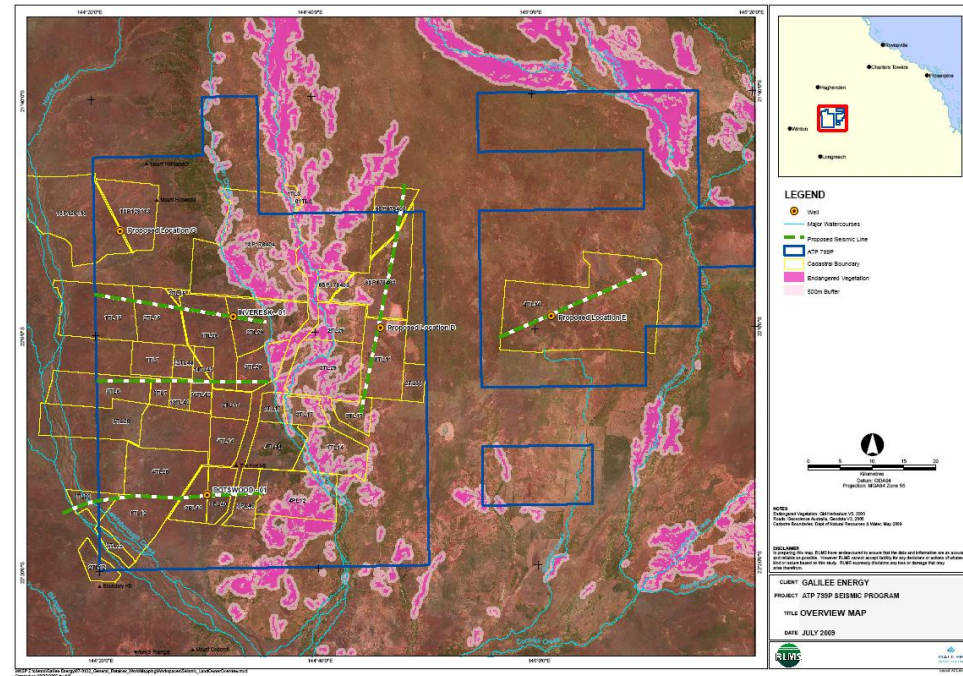
Later Work Programme Feb 2010

33% Relinquishment

Additional core holes

Further seismic

Water management studies



CSG Projects – Key Milestones

Timeline to reserves certification

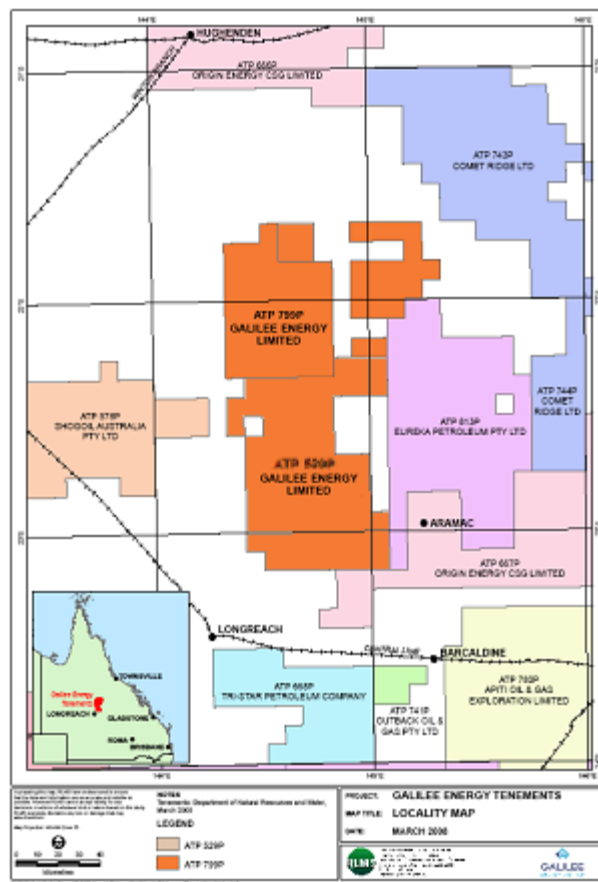
	2009		2010			
	Q3	Q4	Q1	Q2	Q3	Q4
ATP 529 – AGL Farm-in (50%)						
Completion of 5-spot Production Pilot						
Completion Water Handling Facility						
Dewatering of Pilot						
Stage 2 Exploration & Appraisal Wells						
Target for Reserves Certification						
ATP 799 – Galilee 100%						
150km 2D Seismic						
Drill 2 Core Holes						
Later Work Programme						
Desktop Studies						

NOTE: Timetable is indicative only and subject to change

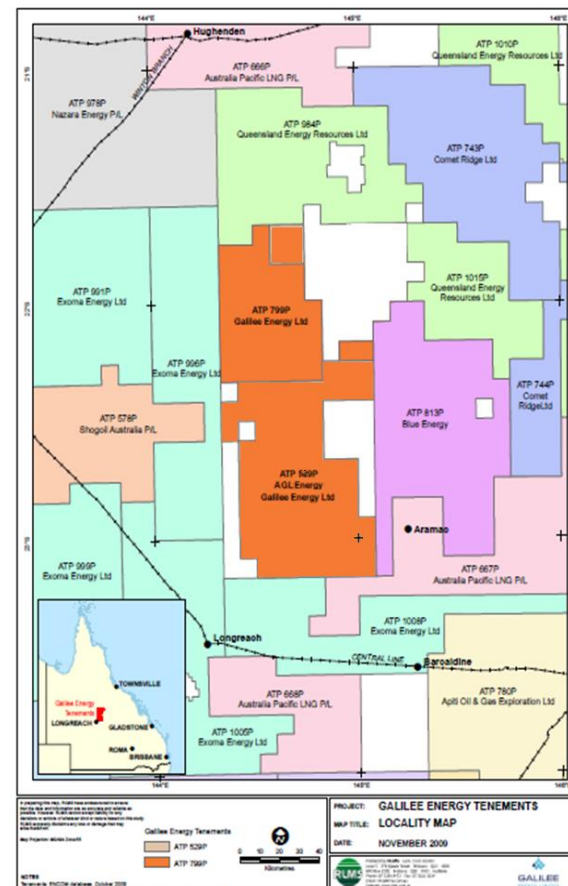
Galilee Basin Activities

High levels of competition for new tenements

Blue Energy
Comet Ridge
Exoma
Nazara
Origin (AP LNG)
QER



March 2008



March 2010

New Zealand Coal Operations

Profitable operations funding development

Cascade Mine

45,000 tonnes per annum open cut

Take or pay contract- Holcim

Whareatea West - Exploration Permit

Prospective for coking and thermal coal

Work programme submitted for next stage of exploration

Takitimu Coal Mine

Fonterra contract extended February 2010

Targeting 220,000 tonnes per annum 09/10

Resource consents obtained for future expansion

Ohai - Prospecting Permit

Upgrading to Exploration Permit

Albury

Prospecting Permit application lodged

Historical data indicates sub-bituminous coal

Eastern Coal Supplies

Coal handling and distribution centre

Administration sales and accounts



Production (to 31 March 2010)

Sales (tonnes)	Sales (NZ\$)
189,045	13,851,325

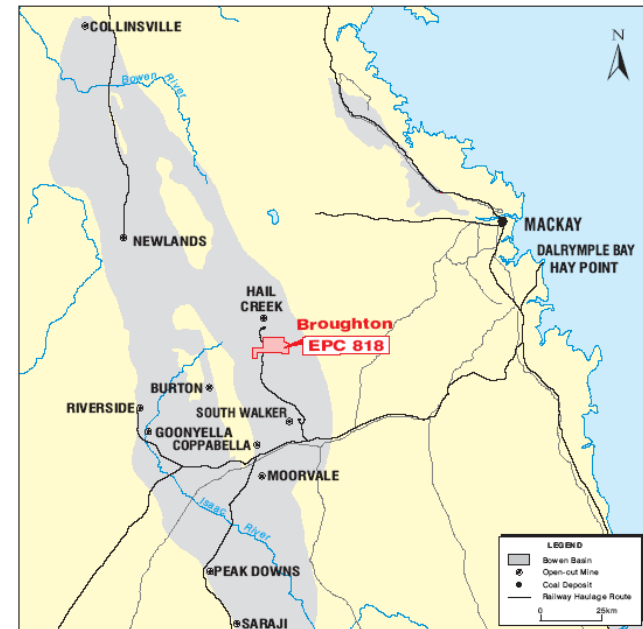
Located in Queensland's Bowen Basin

Joint Venture with Mitsui (10%)

Feasibility study concluded 'stand alone' project
not viable under current commodity pricing

Option exercised for divestment of interest

\$8.5 mill sale to complete May 2010



Top Ten Shareholders

HOLDER	%
Becamal Pty Ltd	18.2
AMP Life	8.2
Corostar	3.8
National Nominees Ltd	3.6
JP Morgan Nominees Aust Ltd	3.4
Pacific Tug Pty Ltd	1.6
Jade Securities Pty Ltd	1.3
Aspac Mining Ltd	1.2
Ekco Investments Pty Ltd	1.2
Mr DK Edwards & Mrs RM Edwards	1.2
Total % of Units	43.6

As of 31 March 2010

Board Members

Building Oil and Gas Expertise



Eastern Corporation Limited	Galilee Energy Limited
<p>Richard May Non-executive Chairman</p>	<p>Steve Koroknay Non-executive Chairman</p>
<p>Campbell Smith Managing Director</p>	<p>Campbell Smith Executive Director.</p>
<p>Steve Koroknay Non-executive Director</p>	<p>Rino Camarri Non-executive Director</p>
<p>John McIntyre Non-executive Director</p>	<p>Cam Rathie Non-executive Director</p>

Management Team

Broad based management skills

Glenn Haworth Operations Manager Galilee Energy Limited	Mr Haworth holds a Bachelor of Engineering from the University of Edinburgh and an MBA from QUT. He has worked in the international oil and gas sector for over 18 years. As a graduate engineer with BP he acquired world class training, oil and gas project experience and commercial accountability. In recent years Mr Haworth's focus has been on consulting related to new business ventures, project management, engineering and coal seam gas technology
Warwick Parker CFO Eastern Corporation Limited	Mr Parker holds a Commerce degree from the University of NSW and has been a Member of the Institute of Chartered Accountants since 1975. Prior to joining Eastern Mr Parker was CFO, Executive Director and Company Secretary of a manufacturing and exporting company with more than 10 overseas subsidiary offices.
Craig Pilcher General Manager Eastern Coal Holdings (NZ) Ltd	Mr Pilcher was previously Marketing and Logistics Manager for Eastern's New Zealand operations before being appointed General Manager in 2008. He is a qualified engineer and has extensive experience in marketing and industrial coal operations in New Zealand.
Bill Lyne Company Secretary	Mr Lyne is the principal of Australian Company Secretary Service and secretary of many listed and other public companies. He is a former State Councilor and a member of Chartered Secretaries Australia and a lecturer at CSA and other courses on company secretarial practice.
Sam Aarons Business Development & Corporate Relations	Miss Aarons has 25 years experience in advertising, public relations, marketing and general commercial management. She was previously a divisional General Manager for mining contractor Henry Walker Eltin.

This presentation may contain forward looking statements that are subject to risk factors associated with oil and gas businesses. It is believed that the expectations reflected in these statements are reasonable but they may be affected by a variety of variables and changes in underlying assumptions which could cause actual results or trends to differ materially, including but not limited to: price fluctuations, actual demand, currency fluctuations, drilling and production results, reserve estimates, loss of market, industry competition, environmental risks, physical risks, legislative, fiscal and regulatory developments, economic and financial market conditions in various countries and regions, political risks, project delay or advancement, approvals and cost estimates.

Investors should undertake their own analysis and obtain independent advice before investing in ECU shares.

All references to dollars, cents or \$ in this presentation are to Australian currency, unless otherwise stated.